



# Rubicon Heritage



Produced in Ireland for:



## National Heritage Week

A Heritage Council programme

# Puzzle Fun!

Activities, colouring and puzzles with an Archaeological Angle for budding Archaeologists, young and not so young!



Colouring recommended for Ages 4+  
Puzzles recommended for Ages 10 - 120

NOTE TO PARENTS/CARERS: If you don't have access to a printer, all of these puzzles and colouring-in pages can be worked with on a PC computer. Take a screenshot of any page using 'Snipping Tool', save it to 'Pictures' then open it in 'Paint' - children (or anyone else!) can then draw, colour and puzzle over the top of the image and either 'SaveAs' to carry on later, or just close and reopen to start from scratch again. For a 3 minute guide: <https://youtu.be/IMF2LZpbHvA>

[www.rubiconheritage.com](http://www.rubiconheritage.com)



**Rubicon  
Heritage**

**Puzzle Fun!**



**National  
Heritage Week**  
A Heritage Council programme

Hello!

The archaeological investigations for the M28 Cork to Ringaskiddy Project are currently underway in County Cork. Rubicon Heritage have begun excavating some archaeological sites and preparing for excavation of others that were discovered during testing work.

A total of 38 new sites have been discovered on the route of the proposed road so far, after we dug nearly 50 km length of trial trenches across 120 areas of the route of the proposed new M28 road.

To celebrate Heritage Week 2022 we have put together this collection of puzzles and colouring pages with an archaeological flavour for you to enjoy.

If you get stuck, or want to check your answers, the solutions are available on our website - the web address is listed below the puzzles.

Please feel free to email us with any questions or feedback, we'd love to hear from you!

...The Rubicon Heritage Team!

For enquiries not relating to puzzles and/or fun, please email [info@rubiconheritage.com](mailto:info@rubiconheritage.com) or call 021 452 0286



# Rubicon Heritage

# Puzzle Fun!

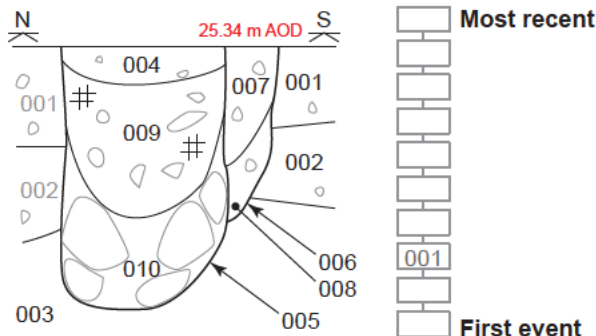


National Heritage Week  
A Heritage Council programme

**Spot the difference**  
How many can you find? ( \_ \_ )



© 2022. Rubicon Heritage Services Ltd.



**Complete the strat Matrix**

If you haven't got a clue, either web-search 'Harris Matrix' and have a go, or **get creative**: Why not draw faces on the stones and colour in!

A big part of being an archaeologist is looking for clues and asking questions about what you find, like a top detective. Compare the two images above and count how many differences you can find. Some are pretty obvious, but others are more tricky! If you can find 5 you are doing well, 10 you are a sleuth and any more than that you should become an archaeologist!

Archaeologists use a 'Harris Matrix' to visually explain the stratigraphic relationships (the chronological order) of discrete archaeological deposits or 'contexts' that have been recorded during excavation work. A 'cut', like a pit or a ditch has to come 'before' the soils that either accumulated in it or were used to fill it in.

A completed matrix has the 'oldest' material at the bottom and the 'youngest' deposits at the top.

See if you can figure out what order these features and deposits were created in and fill in the numbers of the matrix in the spaces provided. We've filled in one as a clue. You can check your answer on our website!

For enquiries not relating to puzzles and/or fun, please email [info@rubiconheritage.com](mailto:info@rubiconheritage.com) or call 021 452 0286

For answers please visit: [www.rubiconheritage.com/HeritageWeek2022\\_solutions](http://www.rubiconheritage.com/HeritageWeek2022_solutions)



Rubicon Heritage

# Puzzle Fun!



National Heritage Week  
A Heritage Council programme

Bonus mission: Go back in and rescue the kitten!  
Super extra special mission: Find all the fruit :)

© 2022. Rubicon Heritage Services Ltd.

**How do we do archaeology? Stay focused in the maze!**

Do the project in the right order, Fieldwork, Post-ex then Reporting..... Which is the right route? ( \_ )

For enquiries not relating to puzzles and/or fun, please email [info@rubiconheritage.com](mailto:info@rubiconheritage.com) or call 021 452 0286

For answers please visit: [www.rubiconheritage.com/HeritageWeek2022\\_solutions](http://www.rubiconheritage.com/HeritageWeek2022_solutions)

# Ogham Activities

Ogham is an ancient Irish script, use the alphabet below to write your name!

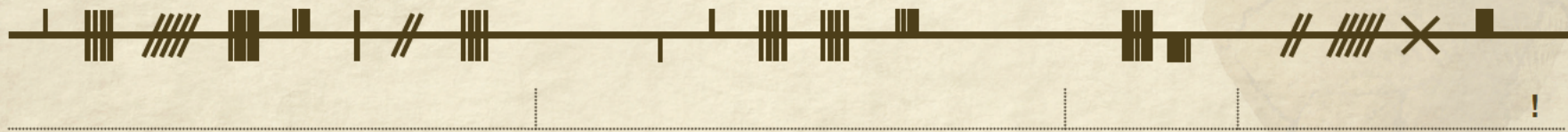
Ogham Alphabet:



NAME

The modern letters j, k, v, w, x and y do not appear in Ogham, do your best to match the sounds of your name using what is available.  
 Try the following first: J = I, K = C, V = BH, W = BH, Y = I.  
 In some cases, the Irish equivalent for 'J' is 'S', eg: Sean = John.

Can you decode this Ogham inscription?



Now use your alphabet to make secret messages and signs!







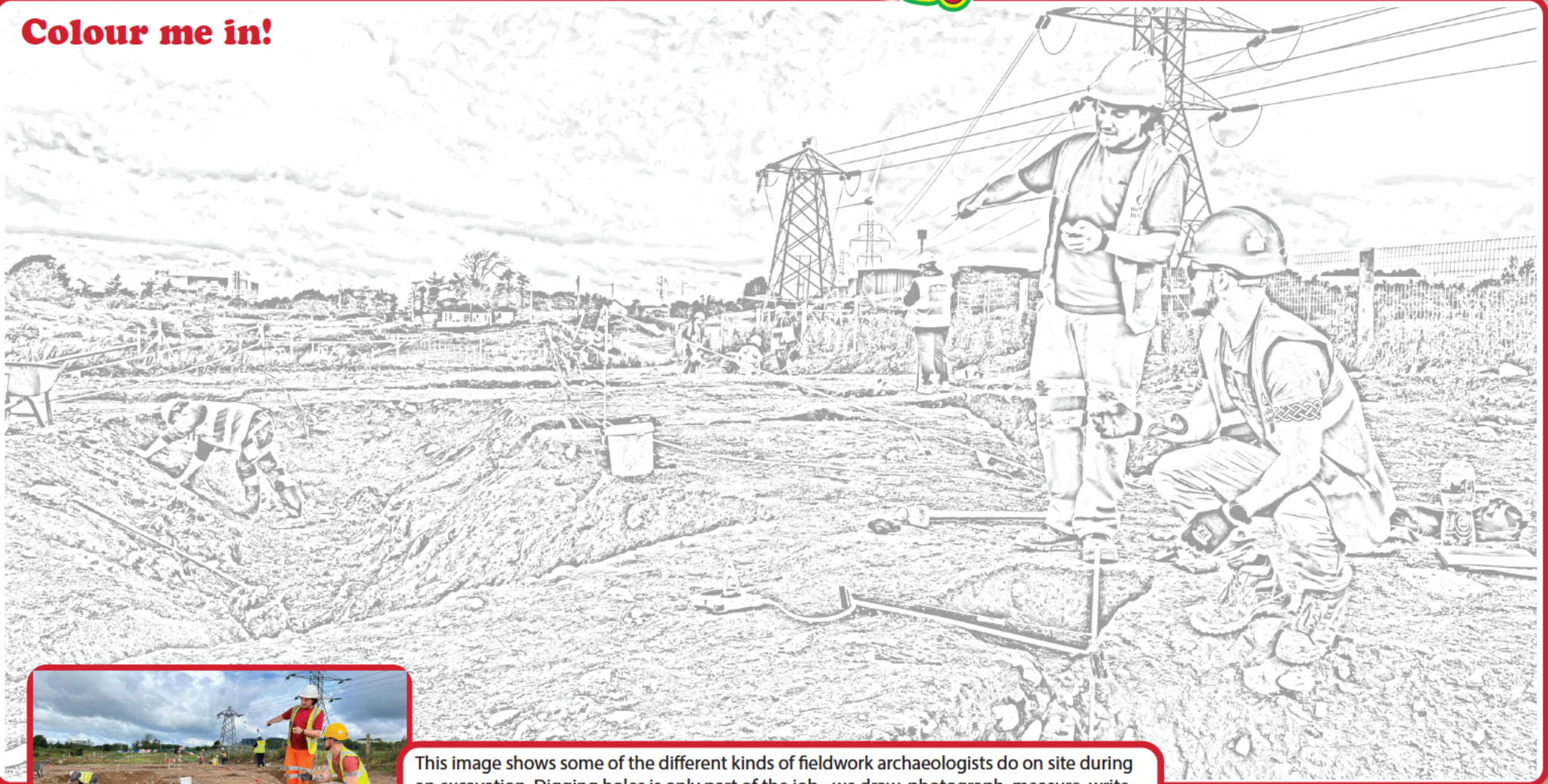
**Rubicon  
Heritage**

**Puzzle Fun!**



**National  
Heritage Week**  
A Heritage Council programme

**Colour me in!**



This image shows some of the different kinds of fieldwork archaeologists do on site during an excavation. Digging holes is only part of the job - we draw, photograph, measure, write about and sample the archaeological material we find. The ditch cut in the photo is part of a really big medieval settlement at Barnahely, near Ringaskiddy in County Cork.

© 2022. Rubicon Heritage Services Ltd.

For enquiries not relating to puzzles and/or fun, please email [info@rubiconheritage.com](mailto:info@rubiconheritage.com) or call 021 452 0286



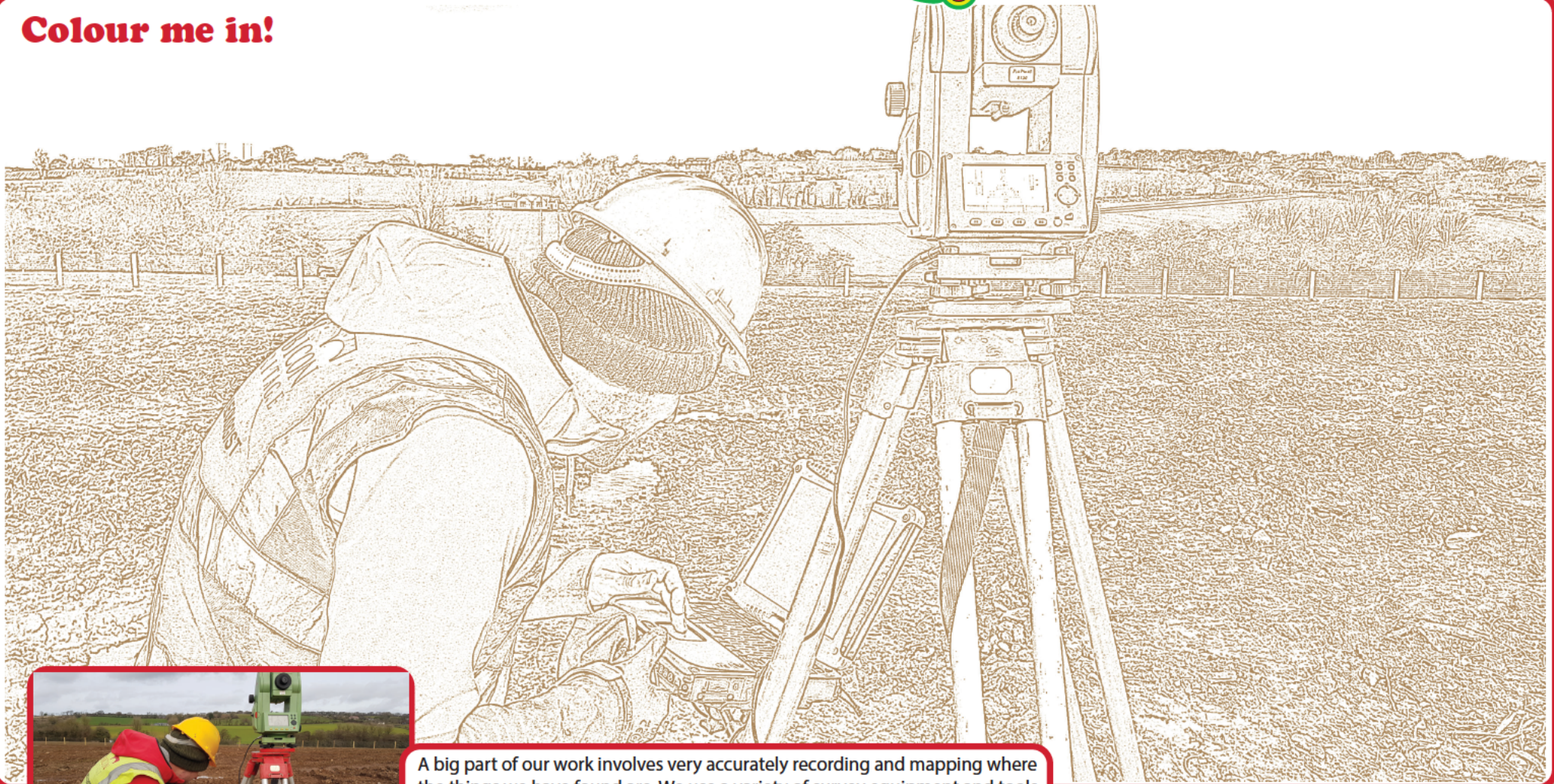
**Rubicon  
Heritage**

**Puzzle Fun!**



**National  
Heritage Week**  
A Heritage Council programme

**Colour me in!**



A big part of our work involves very accurately recording and mapping where the things we have found are. We use a variety of survey equipment and tools to make this as efficient and precise as possible. Here an archaeologist is using a theodolite and computer to measure some archaeology.

© 2022. Rubicon Heritage Services Ltd.

For enquiries not relating to puzzles and/or fun, please email [info@rubiconheritage.com](mailto:info@rubiconheritage.com) or call 021 452 0286





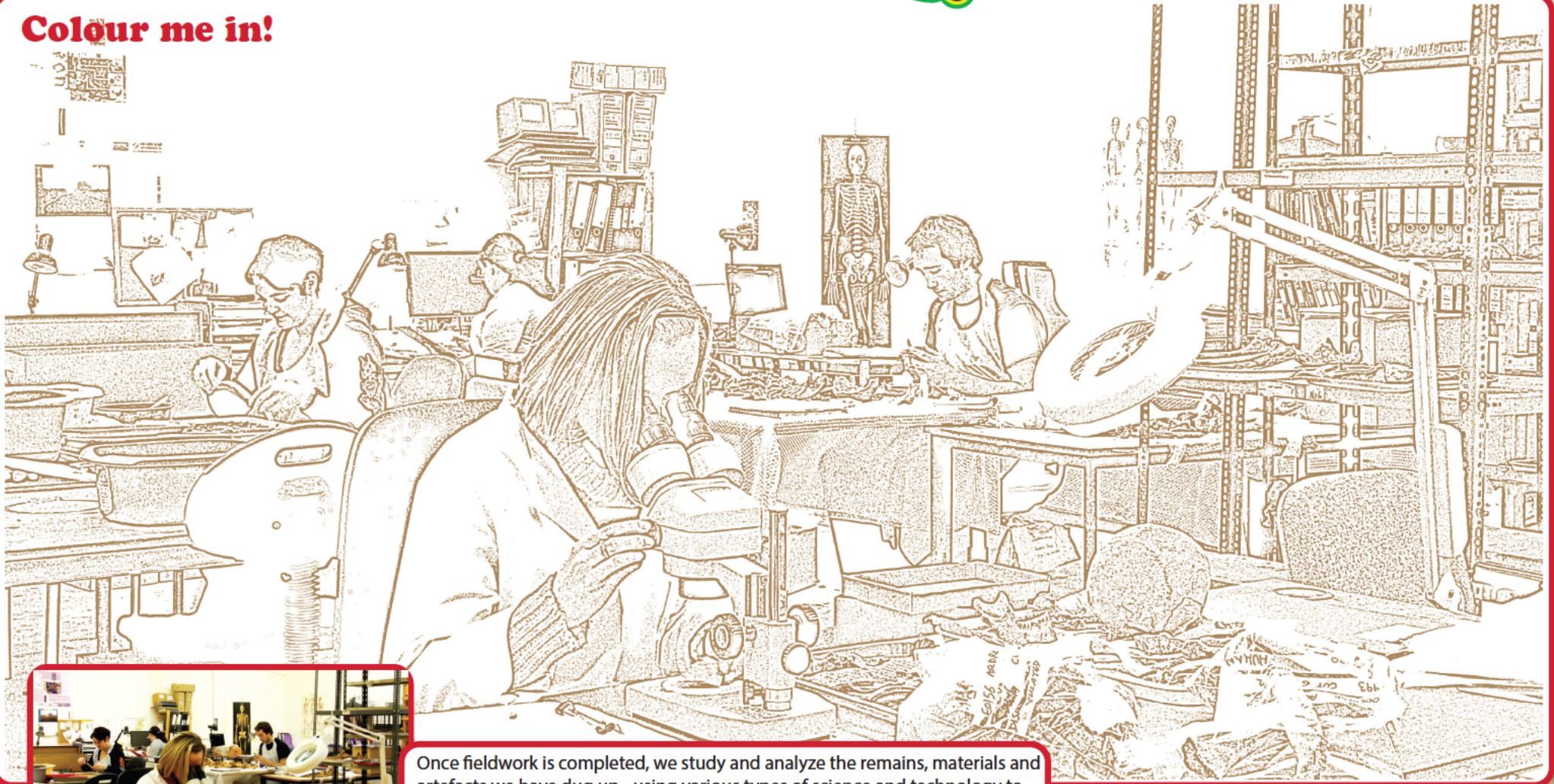
**Rubicon  
Heritage**

**Puzzle Fun!**



**National  
Heritage Week**  
A Heritage Council programme

**Colour me in!**



Once fieldwork is completed, we study and analyze the remains, materials and artefacts we have dug up - using various types of science and technology to learn as much as we can about the people who used, made or lived with them. Here are Rubicon Osteoarchaeologists (human bone specialists) at work.

© 2022. Rubicon Heritage Services Ltd.

For enquiries not relating to puzzles and/or fun, please email [info@rubiconheritage.com](mailto:info@rubiconheritage.com) or call 021 452 0286